



Emma Ruffle Mini Skirt

I N S T R U C T I O N B O O K L E T

A SEWING PATTERN
FROM JOANNA BLÜM STUDIO



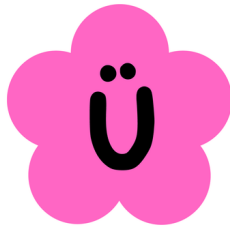
#emmaminiskirt

Add a touch of satin ribbon for the **coquettish trend**

OR



Keep it **classic** and **timeless!**



SEWING PATTERN TERMS AND CONDITIONS



Your pattern is ready. Thanks for downloading!

Before you get started, here are a few important T&Cs



© Copyright of this pattern is owned by Joanna Blüm Studio.

This pattern has been created for you to print and copy for individual home use only.

This pattern is designed for personal, non-commercial use only. It may not be reproduced or distributed, digitally or physically, for commercial purposes.

If you wish to share this pattern online, please kindly include a link to joannablumstudio.com.

We'd love to see your creations! Share them with us on social media by tagging @joannablumstudio and using #emmaminiskirt.

Got Questions? Shoot us an email at joannablumstudio@gmail.com

Table of Contents

SIZE CHART &
GARMENT MEASUREMENTS **5**

GETTING STARTED &
PRINTING INSTRUCTIONS **7**

PATTERN INVENTORY &
FABRIC CONSUMPTION **8**

GLOSSARY **9**

SEWING INSTRUCTIONS **10**

FEEDBACK SURVEY **16**

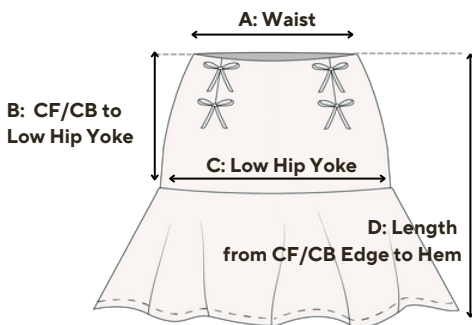
For the **Metric System Measurements & Size Chart**, Please Go to the Next Page :)

Size Chart (Imperial)

	Waist	Hip
W22	21 1/2-22 1/2"	33-34"
W24	23 1/2-24 1/2"	35-36"
W26	25 1/2-26 1/2"	37-38"
W28	27 1/2-28 1/2"	39-40"
W30	29 1/2-30 1/2"	41-42"
W32	31 1/2"-32 1/2"	43-44"
W34	33 1/2"-34 1/2"	45-46"
W36	35 1/2"-36 1/2"	47-48"
W38	37 1/2"-38 1/2"	49-50"



Finished Garment Measurements (Imperial)



	A	B	C	D
W22	11"	7 3/4"	17"	16"
W24	12"	8"	18"	16 1/2"
W26	13"	8 1/4"	19"	17"
W28	14"	8 1/2"	20"	17 1/2"
W30	15"	8 3/4"	21"	18"
W32	16"	9"	22"	18 1/2"
W34	17"	9 1/4"	23"	19"
W36	18"	9 1/2"	24"	19 1/2"
W38	19"	9 3/4"	25"	20"

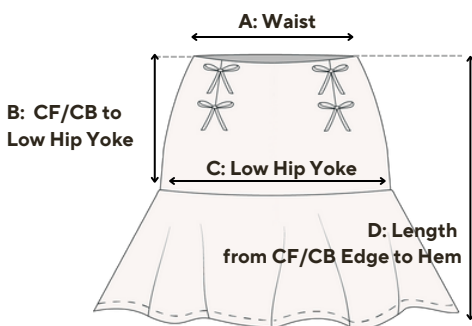
Please note that if your size falls in between, we advise referring to the finished garment measurements to determine the best fit for you. Additionally, please be aware that there might be slight fit differences depending on the fabric you choose, so we highly recommend making a prototype if you desire a perfect fit.

Size Chart (Metric)

	Waist (cm)	Hip (cm)
W22	54.61-57.15	83.82-86.36
W24	59.69-62.23	88.9-91.44
W26	64.77-67.31	93.98-96.52
W28	69.85-72.39	99.06-101.6
W30	74.93-77.47	104.14-106.68
W32	80.01-82.55	109.22-111.76
W34	85.09-87.63	114.3-116.84
W36	90.17-92.71	119.38-121.92
W38	95.25-97.79	124.46-127



Finished Garment Measurements (Metric)



	A	B	C	D
W22	27.94 cm	19.69 cm	43.18 cm	40.64 cm
W24	30.48 cm	20.32 cm	45.72 cm	41.91 cm
W26	33.02 cm	20.96 cm	48.26 cm	43.18 cm
W28	35.56 cm	21.59 cm	50.8 cm	44.45 cm
W30	38.1 cm	22.23 cm	53.34 cm	45.72 cm
W32	40.64 cm	22.86 cm	55.88 cm	46.99 cm
W34	43.18 cm	23.5 cm	58.42 cm	48.26 cm
W36	45.72 cm	24.13 cm	60.96 cm	49.53 cm
W38	48.26 cm	24.77 cm	63.5 cm	50.8 cm

Please note that if your size falls in between, we advise referring to the finished garment measurements to determine the best fit for you. Additionally, please be aware that there might be slight fit differences depending on the fabric you choose, so we highly recommend making a prototype if you desire a perfect fit.

Let's get started!



What do I need?

- Your Choice of Fabric
- 7-9" (18 to 23 cm) Invisible Zipper
- Lightweight Fusible Interfacing
- Sewing Machine/ (Optional) Serger
- Sewing Supplies (Pins, Clips, Pattern Weights, Chalks, Fabric Marking Pen, etc)
- Iron board, iron
- (Optional) Satin Ribbon

Fabric Recommendation

Light to medium-weight woven fabrics with slight stretch, such as those containing a blend of spandex, for a more natural, comfortable and form-fitting fit.

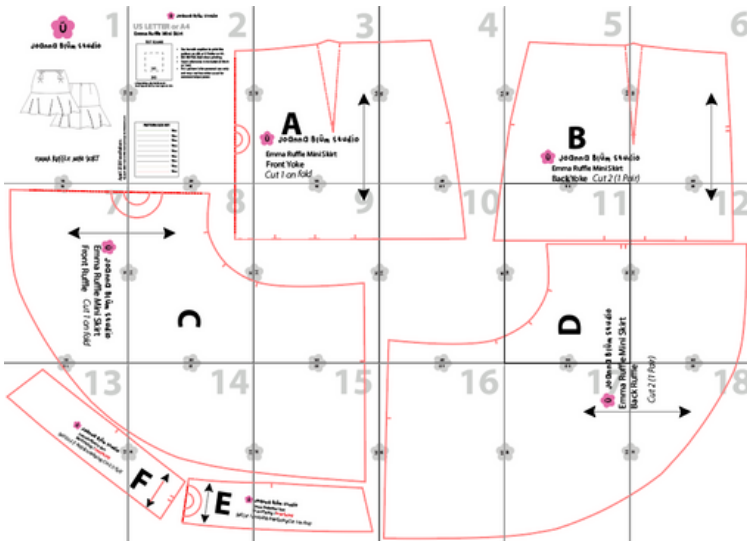
Alternatively, fabrics like rayon challis or crepe de chine offer good drape, allowing the skirt to flow and move gracefully with the body.

Printing Instructions

This pattern file has embedded layers (organized by size). If you don't want to print all sizes, you can choose to print only your size using Adobe Reader (**FREE!**):

1. Open in [Adobe Acrobat Reader](#)
2. Menu -> View -> Show/Hide -> Side Panels -> Make sure Layers is checked.
3. Click on the Layers option on the side panel.
4. There will be an eye next to each layer in the pattern. Turn off (by clicking) all the layers you do not need. The **DO NOT TOUCH** layer needs to remain on for all sizes.

Pattern Inventory



WAIT!
What does it mean to
cut on **FOLD**?

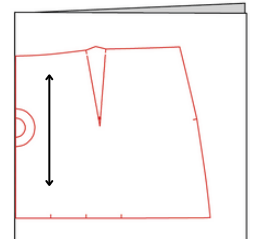
- A.** Front Yoke: *Cut 1 On Fold*
- B.** Back Yoke: *Cut 2 (1 Pair)*
- C.** Front Ruffle: *Cut 1 On Fold*
- D.** Back Ruffle: *Cut 2 (1 Pair)*
- E.** Front Facing & Interfacing: *Cut 1 On Fold*
- F.** Back Facing & Interfacing: *Cut 2 (1 Pair)*

When a pattern piece or fabric is cut on fold, it means that **you fold the fabric in half and place the pattern piece on the fold line.**

This allows you to cut out a symmetrical piece without having to cut two separate pieces and then sew them together

Fabric Consumption

You will need **1.2** to **1.5** yards, depending on your size. This calculation is based on fabric width ranges from 48 to 60 inches (120 to 150 cm). Wider fabric can accommodate a little more, but due to the ruffle pattern pieces, there won't be a significant difference. If you're a beginner and not used to tightly laying out pattern pieces, I highly suggest you get about **2 yards** for this project.



Seam Allowance: Seam allowance refers to the space between the seam and the cut edge of the fabric. It provides room for stitching and helps reinforce the seam for durability.

Open Seam: An open seam is one where the seam allowances on each side of the seam have been pressed open, with the wrong side of the fabric facing the wrong side. This technique creates a flat, neat finish and is commonly used in garments and sewing projects.

Right Side of the Fabric: The right side of the fabric refers to the side that is intended to be visible on the outside of the garment.

Wrong Side of the Fabric: The wrong side is the interior-facing side that remains hidden on the inside of the finished piece

Finish: To finish a seam means to neaten the raw edge to prevent fraying. This can be done in several ways:

1. **Overlock (Serging):** This method trims the seam allowance while simultaneously encasing it in thread, creating a neat and secure edge.
2. **Zigzag Stitching:** Zigzag stitching involves sewing along the edge of the fabric with a zigzag pattern, which helps bind the raw edge and prevent fraying.
3. **Pinking Shears:** These are scissors with a serrated edge that cuts the fabric in a zigzag pattern. Pinking shears are commonly used for lightweight fabrics and create a finished edge that reduces fraying.

Back Stitch: A sewing technique where stitches are made backward before sewing forward, creating a reinforced seam.

Pressing: The process of using an iron to smooth and flatten fabric, seams, or finished garments to achieve a crisp and professional appearance.

Under Stitching: Stitching the seam allowance to the facing, to prevent the facing from rolling towards the right side of the garment.

Zipper Foot: A sewing machine attachment specifically designed for installing zippers neatly and accurately.

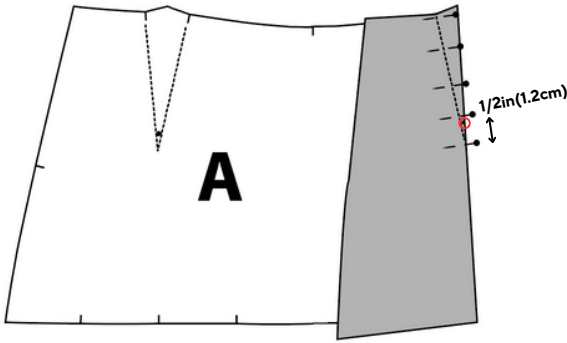
Sewing Instructions

Right
Side

Wrong
Side

Interfacing

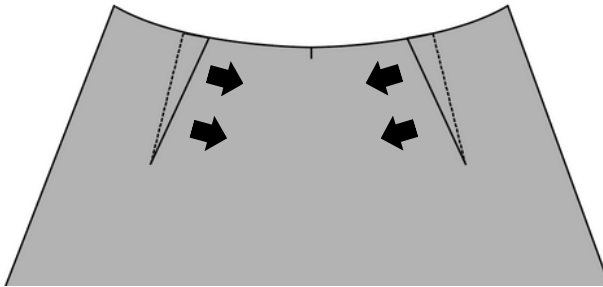
Step 1. Sewing the Darts



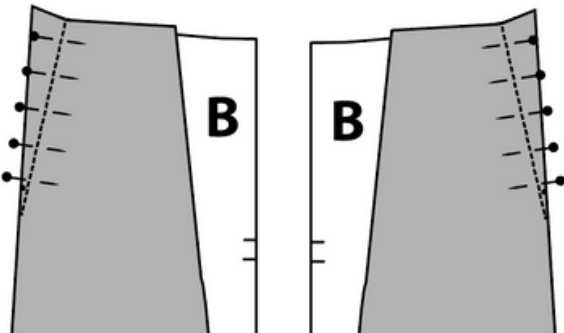
1. Take the front piece (**A**) and align the notches to form each dart. Fold towards the drill hole with right sides together. Secure in place by pinning from the notches to 1.2cm (1/2in) beyond the drill hole.

2. Stitch down the dart to the point beyond the drill hole (remember 1/2in or 1.2cm beyond).

Beginner's Tip: Use a ruler and a fabric pen to draw the stitch line, providing a guideline for sewing.

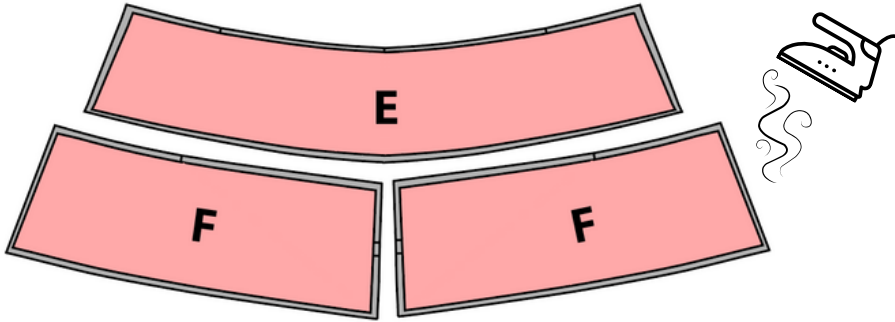


3. Press the bulk of each dart towards the center front.

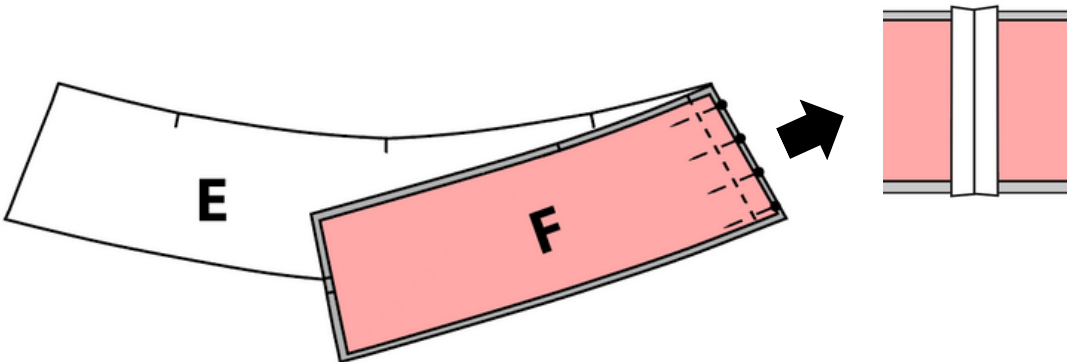


4. Take the back piece (**B**) - there should be two pieces. Repeat Step 1 to create the darts. This time, press the bulk of each dart towards the center back.

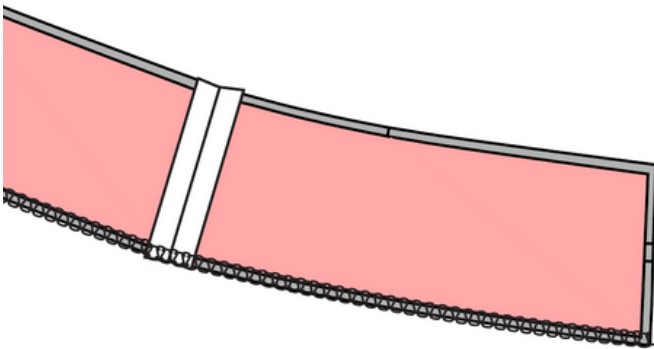
Step 2. Preparing Facing & Interfacing



1. Apply fusible interfacing onto the wrong side of the front facing (**E**) and back facing (**F**) using a light steam iron.

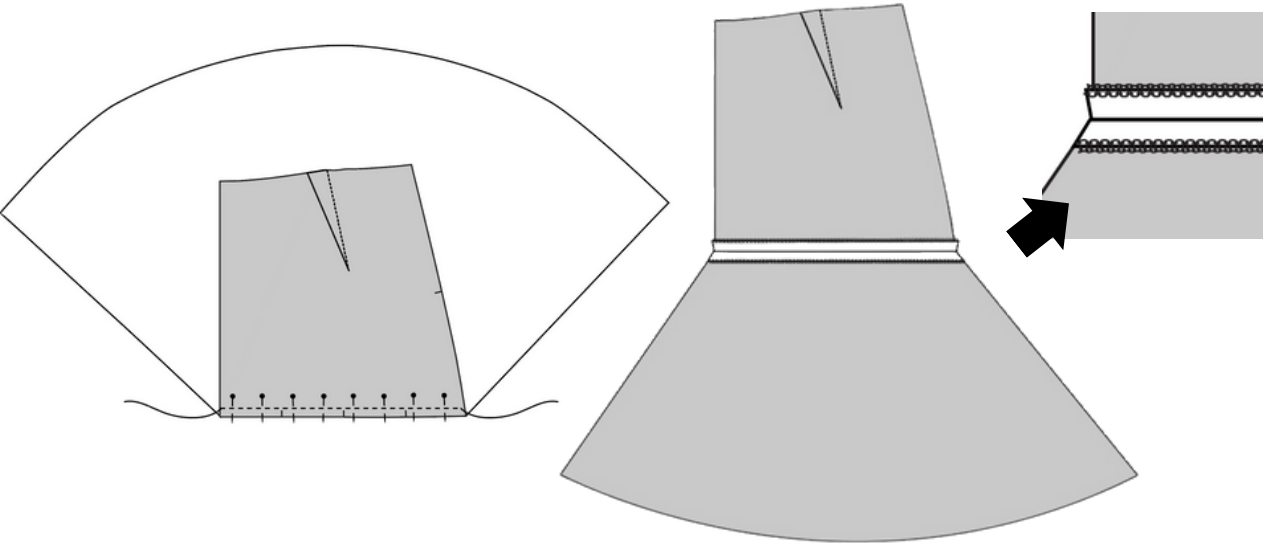


2. Align the front and back facings (**E & F**) with right sides facing each other. Stitch the side seam using a 3/8-inch (or 1cm) wide straight stitch, then press the seam open.



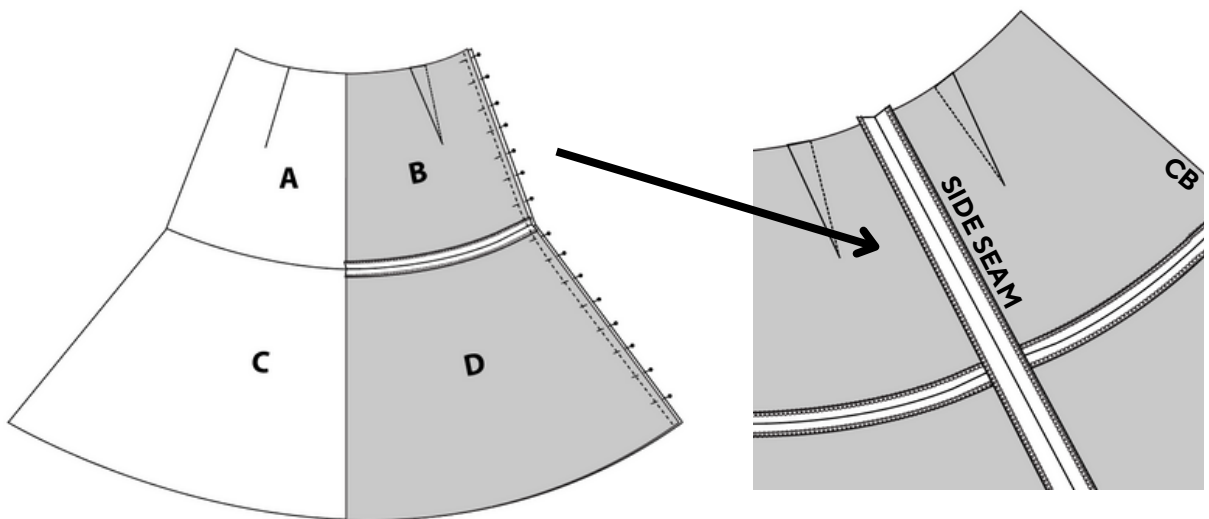
3. Finish the bottom seam of the facings neatly, either with a serger or zigzag stitch.

Step 3. Attaching Yoke and Ruffle



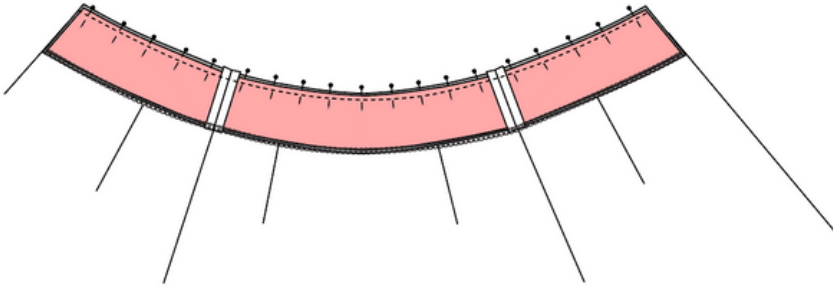
Pin Front Yoke (**A**) and Front Ruffle (**C**) Right Side Together, matching the notches. Stitch the seam using a 3/8-inch (or 1cm) width, then press it open and finish the seam (either with a serger or zigzag stitch). Repeat the process for the back pieces.

Step 4: Attaching the Front Skirt and Back Skirt pieces.

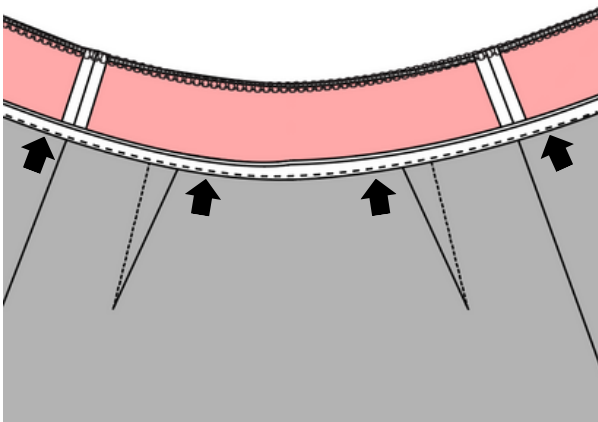


Attach the Front Skirt piece (**A**) and Back Skirt pieces (**B**). Sew the side seam with a 3/8" or 1cm allowance and neatly finish with either a serger or zigzag stitch.

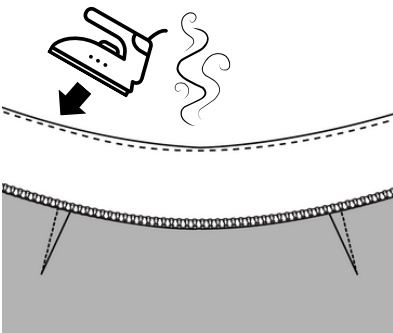
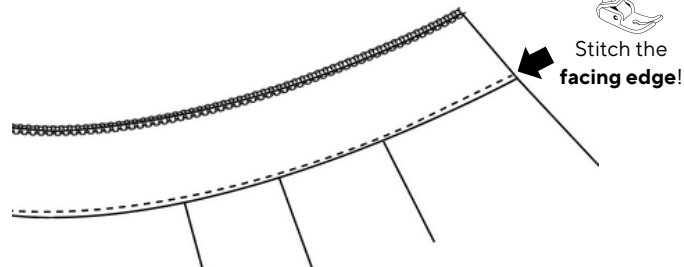
Step 5. Attaching Facing to the Skirt Body



1. Pin the Facing pieces (**E + F**) with the Front + Back Skirt, Right Side Together, using notches as guidance. Stitch with a 3/8" or 1cm seam allowance.

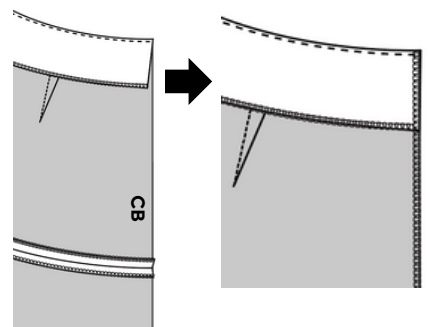


2. Press the seam allowance towards the facing, then stitch the facing edge. (Understitch - stitching the seam allowance to the facing to prevent it from rolling towards the right side of the garment.)

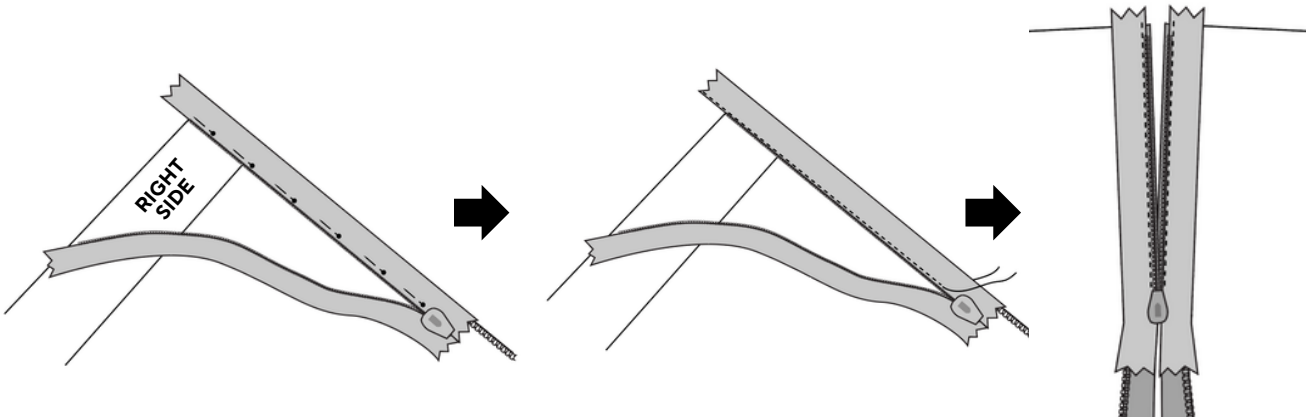


3. Fold the facing over towards the wrong side of the skirt and press.

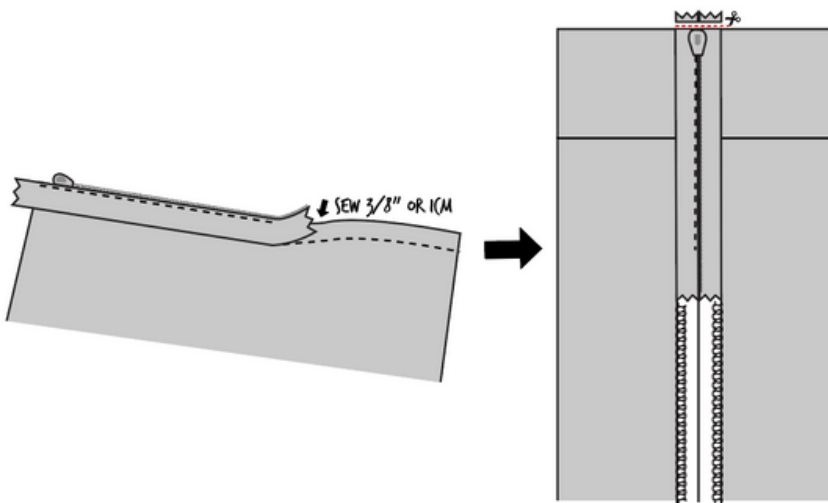
4. Neatly finish the center back seam, either with a serger or zigzag stitch, joining the facing and the skirt part together.



Step 6. Invisible Zipper

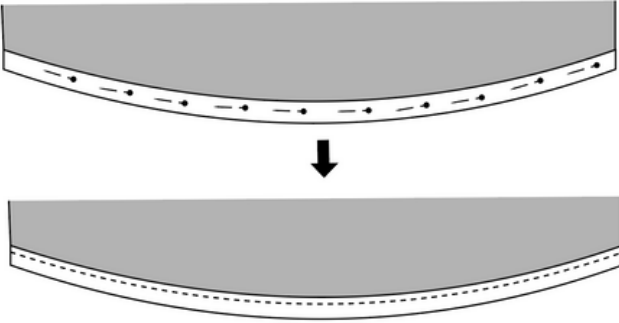


1. Insert an invisible zipper at the left side seam of the skirt. Open the zipper and place the zip tape on the right side of the front skirt, sewing closely to the zipper teeth using an invisible zipper foot. Repeat the process for the other side of the zipper tape on the back skirt.



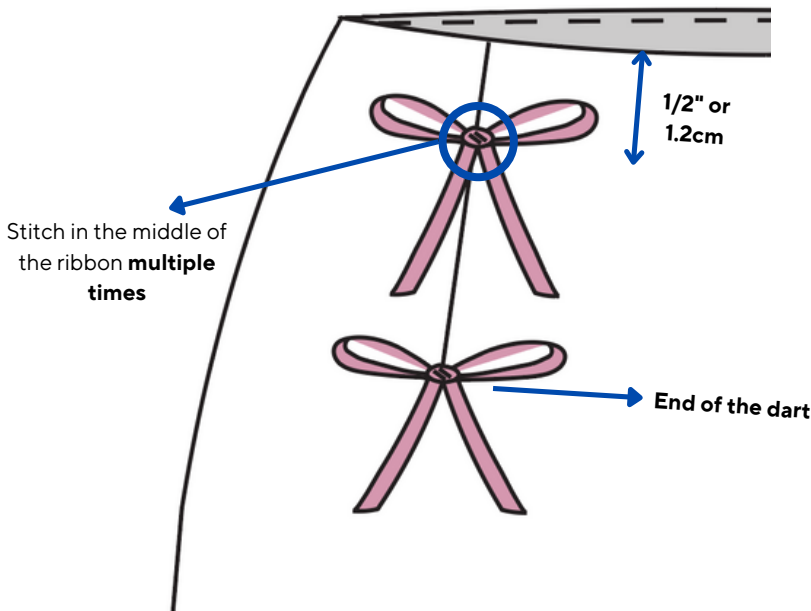
2. To complete, stitch the remaining CB seam below the zipper ($\frac{3}{8}$ " or 1cm seam), starting from the bottom of the zipper and sewing downwards. Backstitch at the beginning and end to secure the seam. Press the seam open.

Step 7. Sew Hem



Turn up hem by 3/8" or 1cm and press. Repeat to enclose the raw edge inside the hem. Stitch close to the folded edge.

(Optional) Step 8. Attaching Satin Ribbon.



1. Prepare 4 satin ribbons of your preference.
2. Tack one ribbon 1/2" (1.2 cm) away from the waist edge. Secure it by stitching in the middle of the ribbon **multiple times**.
3. Tack another ribbon at the end of the front dart.
4. Repeat the process for the other side.

Feedback Survey



Thank you for your valuable feedback! Your input will help us improve. As a token of our appreciation, you have the chance to win a **\$25 gift card**. We truly appreciate your support.

Please **email** this form to: **joannablumstudio@gmail.com**

What is your proficiency level in sewing?

- Beginner Intermediate Advanced

How satisfied are you with the digital pattern and sewing instructions provided?

- Very Satisfied Satisfied Neutral
 Dissatisfied Very dissatisfied Other: _____

Were the sewing instructions **clear** and **easy** to follow?

- Yes Somewhat No

Did you encounter any difficulties understanding the instructions?

- Yes No

Were the pattern pieces accurate and properly labeled?

- Yes No

Any problems preparing (printing/cutting/taping) pattern pieces?

- Yes No

Did the pattern provide accurate sizing information?

- Yes No

How did the final garment fit compared to your expectations?

- Exactly as expected Slightly larger Slightly smaller
 Much larger Much smaller Other: _____

If you answered negatively to any of the questions above, we kindly ask you to provide further details or explanations.

Would you recommend this digital pattern and instructions to others? **Yes** **No** **Maybe**

Did this pattern exceed your expectations? **Yes** **No** **Maybe**

Would you consider purchasing patterns from us in the future? **Yes** **No** **Maybe**

Additional Feedbacks: