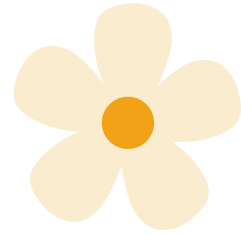


Daisy Skirt

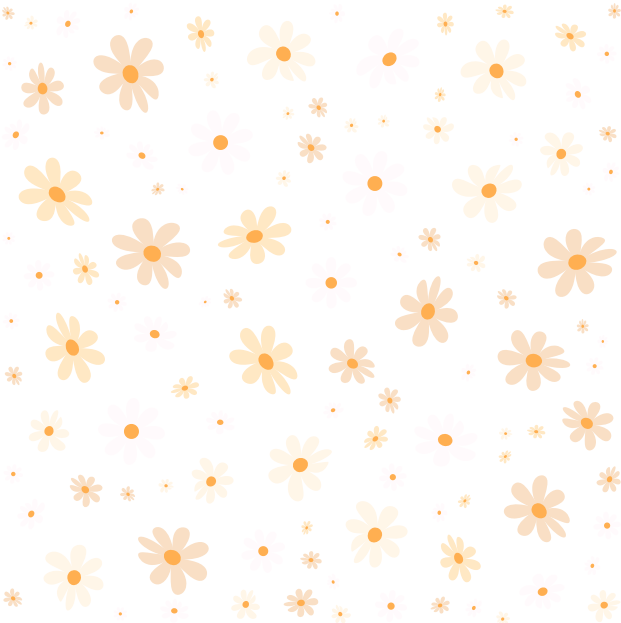
INSTRUCTION BOOKLET

A SEWING PATTERN
FROM JOANNA BLÜM STUDIO

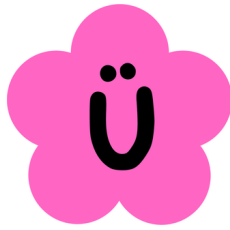


#daisyskirt

Difficulty: ★★☆☆☆
Ideal for the **Confident Beginner**



SOFT **SCALLOPS** AND **SUNNY VIBES**



SEWING PATTERN TERMS AND CONDITIONS



**Your pattern is ready.
Thanks for downloading!**

Before you get started, here are a few important T&Cs



© Copyright of this pattern is owned by Joanna Blüm Studio.

This pattern has been created for you to print and copy for individual home use only.

This pattern is designed for personal, non-commercial use only. It may not be reproduced or distributed, digitally or physically, for commercial purposes.

If you wish to share this pattern online, please kindly include a link to joannablumstudio.com.

We'd love to see your creations! Share them with us on social media by tagging @joannablumstudio and using #daisyskirt

Got Questions? Shoot us an email at joannablumstudio@gmail.com

Table of Contents

SIZE INFORMATION	5
GETTING STARTED & PRINTING INSTRUCTIONS	6
PATTERN INVENTORY & FABRIC CONSUMPTION	7
GLOSSARY	8
SEWING INSTRUCTIONS	9
FEEDBACK SURVEY	13

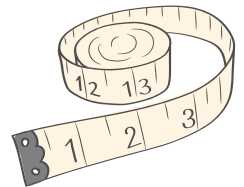
Size Chart

Imperial System (inch)

SIZE	WAIST
Size 1	24-30
Size 2	30-36

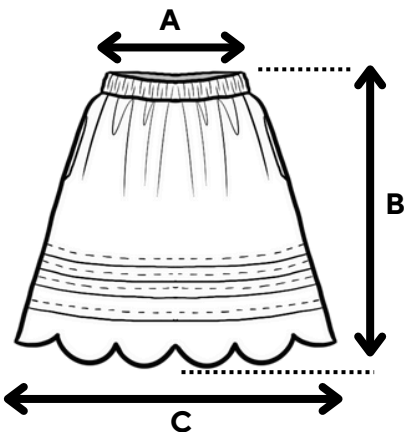
Metric System (cm)

SIZE	WAIST
Size 1	61-76
Size 2	76-91



Please note that the waist design is elasticated, which means the sizing is quite flexible. I recommend sizing down if you are between sizes.

Final Measurement



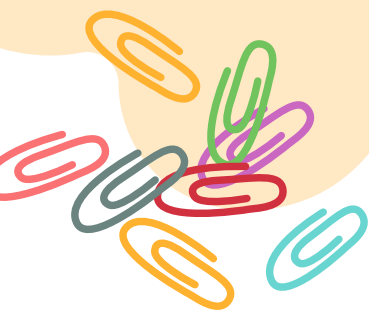
SIZE	A (Waist)	B (Length)	C (Bottom Sweep)
Size 1	Your Waist	20"	24"
Size 2	Size	21"	28"



Let's get started!

What do I need?

- Your Choice of Fabric
- 1 1/2"(38mm) Elastic
- Sewing Machine
- (Optional) Serger
- Sewing Supplies (Pins, Clips, Pattern Weights, Chalks, Fabric Marking Pen, etc)
- Iron board, iron



Fabric Recommendation

Cotton Twill or Poplin: This lightweight and breathable fabric provides just enough structure to hold details like scalloped edges while still draping nicely for a flattering silhouette.

Linen: Linen fabric has a natural texture and excellent breathability, making it perfect for summer shorts.

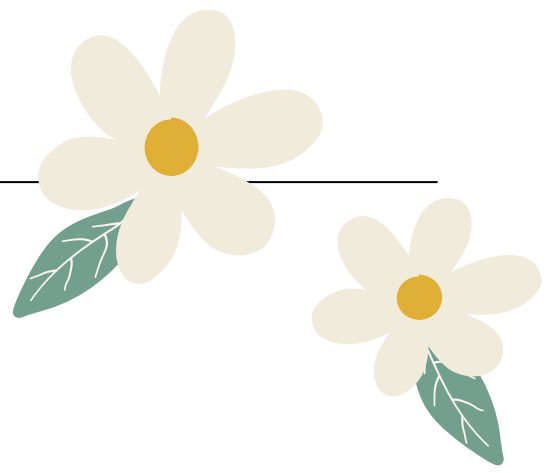
Lightweight Denim or Chambray: Casual, structured, and perfect for showing off scallops!!

Printing Instructions

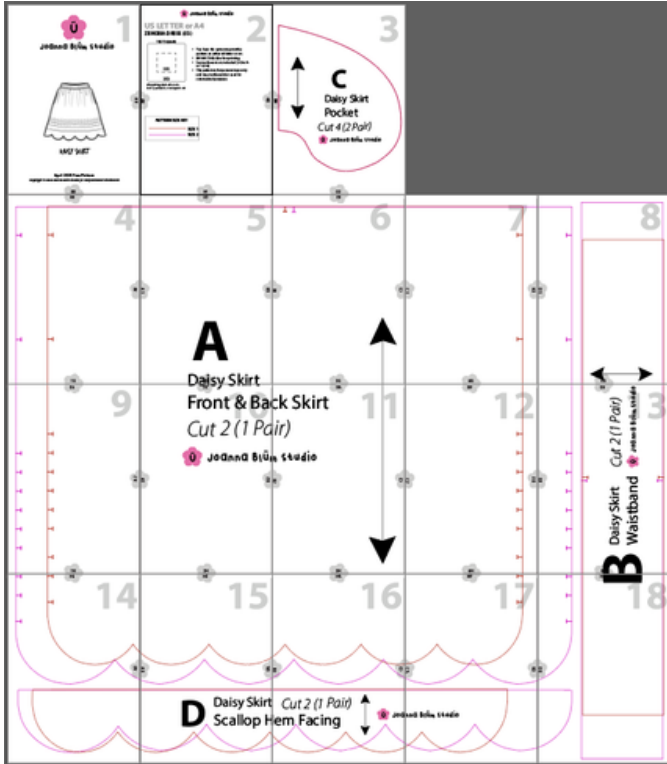


This pattern file has embedded layers (organized by size). If you don't want to print all sizes, you can choose to print only your size using Adobe Reader (**FREE!**):

1. Open in [Adobe Acrobat Reader](#)
2. Menu -> View -> Show/Hide -> Side Panels -> Make sure Layers is checked.
3. Click on the Layers option on the side panel.
4. There will be an eye next to each layer in the pattern. Turn off (by clicking) all the layers you do not need. The DO NOT TOUCH layer needs to remain on for all sizes.



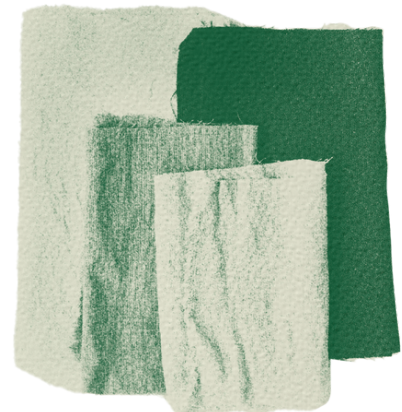
Pattern Inventory



- A.** Front & Back Skirt: Cut 2 (1 Pair)
- B.** Waistband: Cut 2 (1 Pair)
- C.** Pocket: Cut 4 (2 Pairs)
- D.** Scallop Hem Facing: Cut 2 (1 Pair)

Fabric Consumption

You'll need a little over 1 yard of fabric – approximately **1.25 yards** (or 1.15 meters). This estimate is based on 58–60 inch wide fabric (with a cuttable width of about 56 inches / 142 cm). If you're new to sewing or not yet comfortable with tight pattern layouts, I recommend getting at least 1.5-2 yards (around 1.4-1.83 meters) to give yourself a bit more flexibility. You can also cut the facing pieces on the cross grain or use scrap/contrast fabric for small parts like pockets to help conserve material.



Glossary



Seam Allowance: Seam allowance refers to the space between the seam and the cut edge of the fabric. It provides room for stitching and helps reinforce the seam for durability.

Open Seam: An open seam is one where the seam allowances on each side of the seam have been pressed open, with the wrong side of the fabric facing the wrong side. This technique creates a flat, neat finish and is commonly used in garments and sewing projects.

Right Side of the Fabric: The right side of the fabric refers to the side that is intended to be visible on the outside of the garment.

Wrong Side of the Fabric: The wrong side is the interior-facing side that remains hidden on the inside of the finished piece.

Notches: Small, strategically placed markings or cuts on fabric pieces that serve as reference points to align and match corresponding pieces accurately during assembly.

Finish: To finish a seam means to neaten the raw edge to prevent fraying. This can be done in several ways:

1. **Overlock (Serging):** This method trims the seam allowance while simultaneously encasing it in thread, creating a neat and secure edge.
2. **Zigzag Stitching:** Zigzag stitching involves sewing along the edge of the fabric with a zigzag pattern, which helps bind the raw edge and prevent fraying.
3. **Pinking Shears:** These are scissors with a serrated edge that cuts the fabric in a zigzag pattern. Pinking shears are commonly used for lightweight fabrics and create a finished edge that reduces fraying.

Staystitch: A row of stitching just inside the seam line on a single layer of fabric to prevent the fabric from stretching or distorting during construction. It is typically used on curves and bias edges.

Back Stitch: A sewing technique where stitches are made backward before sewing forward, creating a reinforced seam.

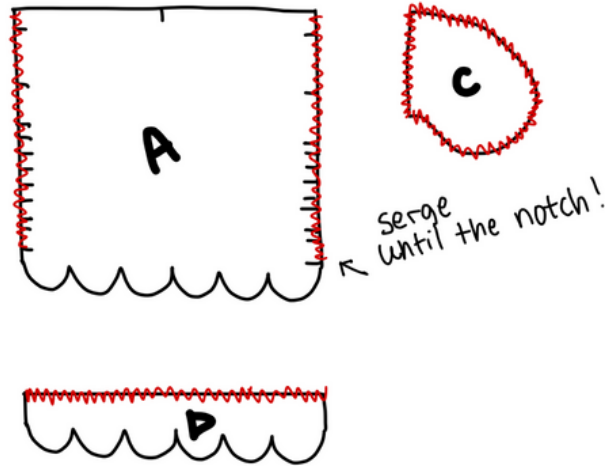
Pressing: The process of using an iron to smooth and flatten fabric, seams, or finished garments to achieve a crisp and professional appearance.

Under Stitching: Stitching the seam allowance to the facing, to prevent the facing from rolling towards the right side of the garment.

Zipper Foot: A sewing machine attachment specifically designed for installing zippers neatly and accurately.

Sewing Instructions

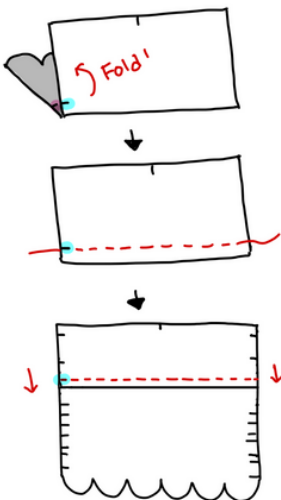
Step 1. Finish Edges



Finish the raw edges of your fabric as needed before starting any major construction (e.g., using a serger or zigzag stitch).

Step 2: Sew Pintucks

We're going to sew four pintucks using the notches as a guide.

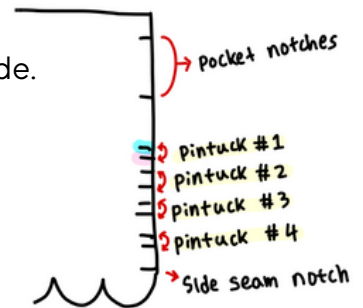


a. For Pintuck #1:

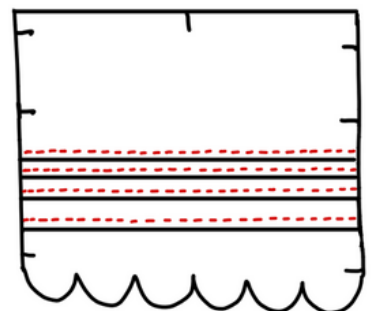
Fold the fabric **WRONG** sides together, aligning the sky blue notch to the pink notch.

Sew a straight line 1/2" (or 1.3 cm) from the fold.

Press down the seam

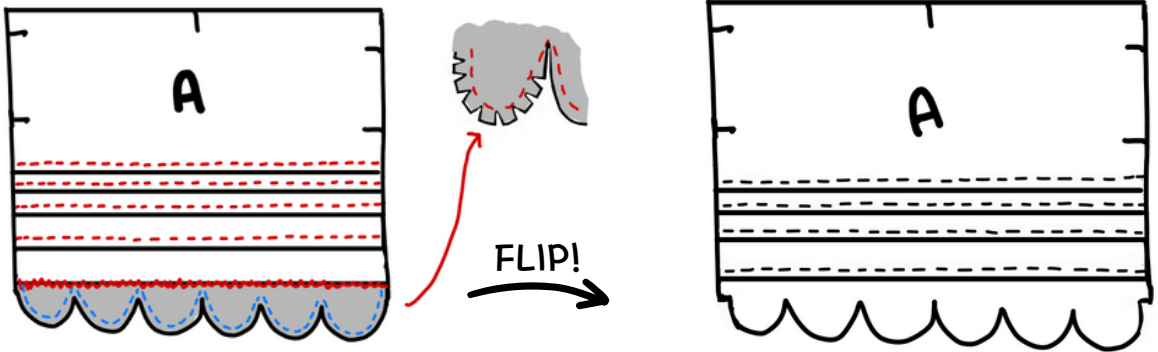


After (b), It should look like this pic:

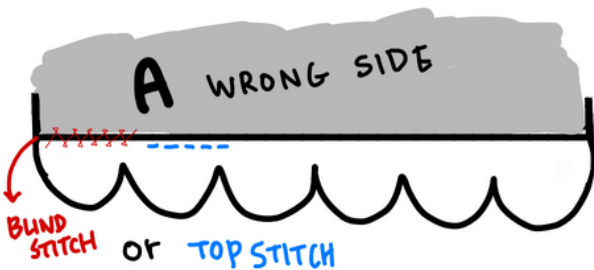


b. Repeat the same process for Pintucks #2, #3, and #4.

Step 3. Sew Scallop Hem Facing



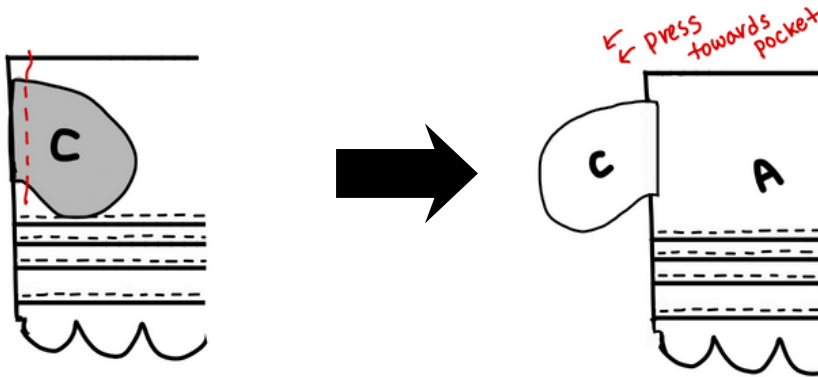
- Place the scallop hem facing **right sides together** with the skirt.
- Use an erasable pen to draw your curve guideline.
- Sew along the curve at 1/2" (1.3cm) seam allowance.
- Clip into the curves** carefully to help them turn smoothly (you can notch or clip depending on the curve).
- Flip the facing to the inside and press it well.



- Because the facing is only attached along the edge, it might flap around. To keep it in place, you can either:
 - Blind stitch it down by hand, or
 - Topstitch close to the seam on the right side.
 - (Choose the finish you prefer!)

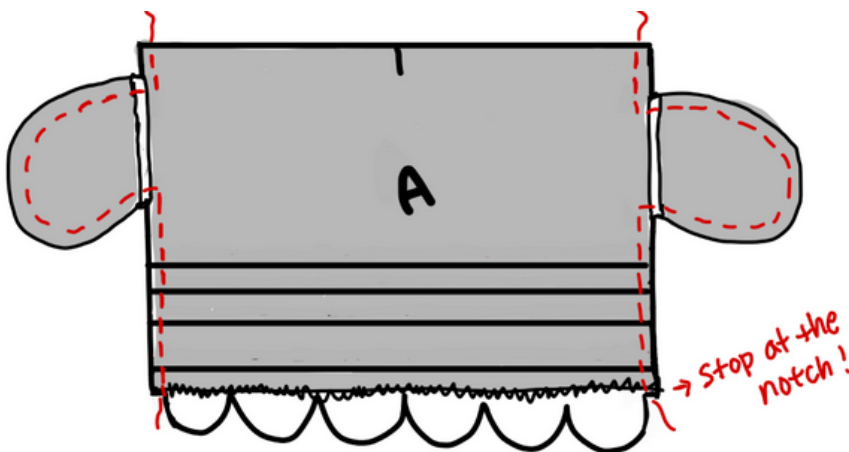
Sewing Instructions

Step 4. Attach the Pockets



- With **right sides together**, align and attach the Pocket (C) to Skirt (A) at the side seam. Sew with a 1/2" (1.3cm) seam allowance.
- Press the seam allowance towards the pocket.

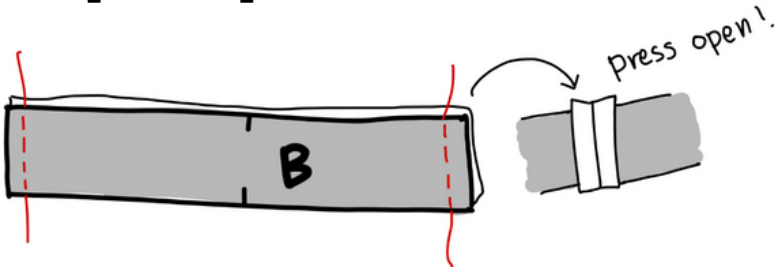
Step 5. Sew Side Seams



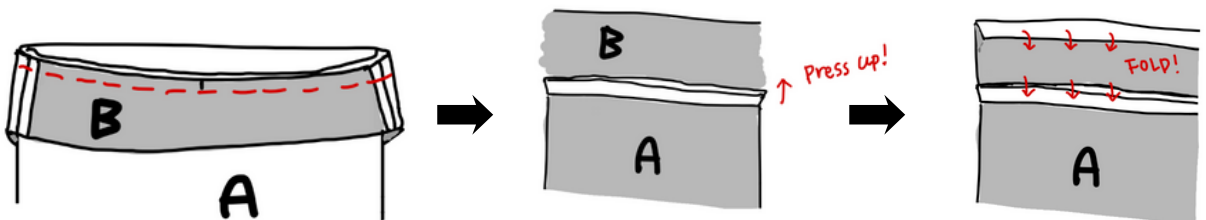
- Place the front and back skirt pieces **right sides together**.
- Sew the side seams (1/2" or 1.3cm SA), making sure to go around the pockets.
- Stop sewing at the notch right before the scalloped hem starts—this area is already faced, so it's easy to identify where to stop.

Sewing Instructions

Step 6. Prepare and Attach Waistband



a. Sew the short ends of the waistband **right sides together** using a 1/2" seam (1.3cm) allowance to make a circle.

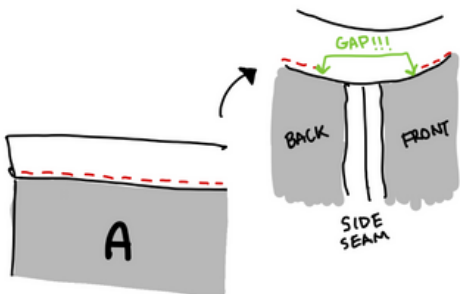


b. Pin the waistband to the skirt, matching center front and center back notches. Sew together at 1/2" (1.3cm) SA.

c. Press the seam allowance up toward the waistband.

d. Fold the top edge of the waistband down 1/2" (1.3cm) and press.

e. Fold the waistband in half lengthwise and press again to enclose the raw edge.



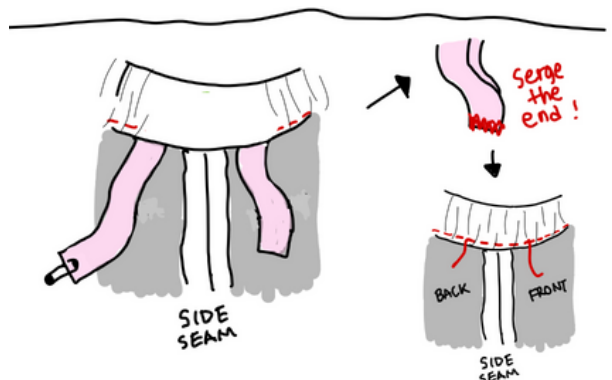
f. Topstitch along the folded edge of the waistband.

g. **Leave a 3" opening** at one of the side seams to insert the elastic.

h. Feed the elastic through the waistband casing using a safety pin or bodkin.

i. When the elastic is through, overlap and serge or zigzag the ends together.

j. Stitch the opening closed.



Feedback Survey



Thank you for your valuable feedback! Your input will help us improve. As a token of our appreciation, you have the chance to win a **gift card**. We truly appreciate your support.

Please email this form along with a photo of your creation!
(Note: We may share your photo—let us know if you'd prefer us not to.):
joannablumstudio@gmail.com

What is your proficiency level in sewing?

- Beginner Intermediate Advanced

How satisfied are you with the digital pattern and sewing instructions provided?

- Very Satisfied Satisfied Neutral
 Dissatisfied Very dissatisfied Other: _____

Were the sewing instructions **clear** and **easy** to follow?

- Yes Somewhat No

Did you encounter any difficulties understanding the instructions?

- Yes No

Were the pattern pieces accurate and properly labeled?

- Yes No

Any problems preparing (printing/cutting/taping) pattern pieces?

- Yes No

Did the pattern provide accurate sizing information?

- Yes No

How did the final garment fit compared to your expectations?

- Exactly as expected Slightly larger Slightly smaller
 Much larger Much smaller Other: _____

If you answered negatively to any of the questions above, we kindly ask you to provide further details or explanations.

Would you recommend this digital pattern and instructions to others? **Yes** **No** **Maybe**

Did this pattern exceed your expectations? **Yes** **No** **Maybe**

Would you consider purchasing patterns from us in the future? **Yes** **No** **Maybe**

Additional Feedbacks: